

Fixed castor QDF 250 LZK

Extra Heavy Duty Series QD - Wheel Z

-30 °C - +80 °C

+++
swivels easily

+++
wear resistant

+++
shock proof

+++
floor protective

+++
weather proof

Wheel



Tread: Cast polyurethane, 95±3 Shore A

Wheel centre, Cast-iron - painted

Fork



Pressed steel welded construction,
with axial ball bearing and tapered roller bearing,
dust protection ring,
very strong integrated Kingpin,
grease nipple,
wheel axle with self-locking nut finish: zinc plated

Fixed castor Wheel-Ø A x width B mm: 250x60

Load Capacity kg: 1400

Load capacity tested according to EN 12530 and EN 12527

Overall height H mm: 300

Dimension of top plate TP 150x110
mm:

Hole spacing HS mm: 105x80/121x59

Hole-Ø HD mm: 12,5

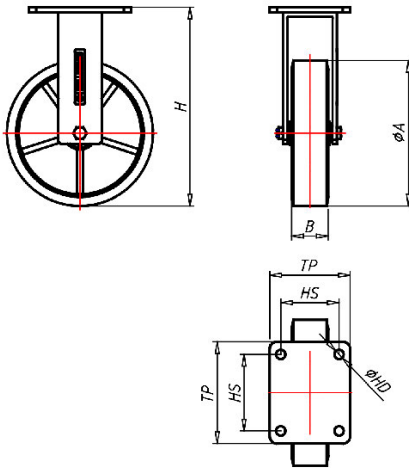
Wheel bearing: Ball bearing

Advantages

- ✓ silent in motion
- ✓ low rolling resistance
- ✓ high abrasion and tear resistance
- ✓ high resistance to shocks
- ✓ good chemical resistance

©Copyright 2024 Rollenbau GmbH, www.rollenbau.at 20.05.2024

ROLLENBAU



Applications

- Heavy duty dollies
- Trash container trucks
- Machinery moving dollies
- Racks